

ENERGY BREAKTHROUGH SUSTAINABILITY HANDBOOK

The Dja Dja Wurrung People have cared for Djandak (land) on which Energy Breakthrough (EB) is held for over 65,000 years. By taking a few simple steps, we can ensure we too, can look after this unceded land.

Working closely with social enterprise, B-Alternative, Central Goldfields Shire Council are moving towards creating a Zero Waste event, but we need everyone onsite to be a part of the movement!

B-Alternative is a social enterprise which helps organisations, schools and events eradicate waste by providing ethical resource recovery and waste management services and raising awareness through Earth-focused education and behaviour change.

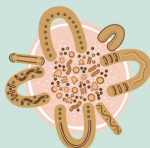
You will meet the friendly B-Alternative staff and volunteers throughout the event, who will be helping to make sure EB has the smallest environmental impact as possible.

The following guide provides an overview of sustainability initiatives you'll notice at the event as well as a number of actions we need your help and involvement with to implement. We ask that your school take the time to carefully absorb this information, support the concepts, and familiarise yourself with the expectations when camping on the land.

COMMITMENTS FROM EVENT ORGANISERS



Acknowledgment of Country throughout the event.



Seeking out opportunities to listen to and learn from First Nations Peoples of the area.



Caring for Country by leaving the event site better than we found it, and not damaging any land whilst there.

Artwork: Rising Sun, Country Picnic, Country Campsite – Bidjara Artists Bigi Nagala.



Implementing a virtual environmental suggestion box at the event. Attendees can scan a QR code and add highlights, suggestions, questions, improvements or photos for future years.

2023 INITIATIVE: NO SINGLE USE PLASTICS ON SITE



No single use plastic water or soft drink bottles will be sold on site and are discouraged from being onsite. Please bring your own refillable bottle.



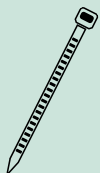
No single use coffee cups/lids will be sold on site and are discouraged from being onsite. Please bring your own coffee cup.



No single use plastic bags should be brought to site. Please bring reusable bags.



Vendors will not be selling single use plastic items onsite including bottles of soft drink. Canned drinks will be available.



Please use reusable cable ties in site set-up. The cable tie is a single use plastic. It is estimated that over 100 billion cable ties are produced every year.

COMMITMENTS FROM VENDORS

Vendors are working closely with B-Alternative and Event Organisers to make every effort to have a plastic-free event. Vendors are committed to carrying out the following actions:



No plastic bags will be used by vendors.



No single use plastic items will be provided by vendors.



Only canned drinks will be served
- no plastic or tetra-pak.



Food and drink will be served in B-Alternative reusable crockery.



Vendors will take responsibility for their waste produced and separate out organics and recyclables.

WATER



There will be taps on site. Please bring your own refillable water bottle and large water containers to collect water.



If you would like to purchase bulk water for your school, Wallaby Water canned water can be pre-purchased through B-Alternative, and can be picked up once you arrive onsite. Please email support@b-alternative.com if you would like to arrange this. Deadline for orders: 1st November.

REUSABLE CROCKERY SYSTEM



In an effort to have as little landfill waste as possible, B-Alternative will be implementing a reusable system which will see the food and beverage vendors have reusable crockery instead of single use packaging. This initiative helps us reduce our vendor related event waste by up to 95%.

HOW IT WORKS



Please do not take any B-Alternative reusable crockery home with you. If you do accidentally take items home, they will need to be returned to B-Alternative for future use. Please contact support@b-altnernative.com to arrange a return from your school.

RESOURCE RECOVERY SYSTEM

To reduce the amount of general waste on site and to ensure items are properly recycled or composted, B-Alternative will be setting up Resource Recovery Stations with multiple waste streams.

Resource Recovery Stations



All campers will be provided with organics, recycling and general waste bags on site. Separate your waste into the appropriate bags then drop them off at your nearest Resource Recovery Station.



There will be an e-waste drop off point for any electronic waste like solar panels, fairy lights etc. Please take them to the drop off point or leave at a Resource Recovery Station. Please do not put electronic waste into the bin - they are valuable resources!



There will be a drop off for clean cardboard located in the campgrounds.



Carpet must be taken back to school, cleaned and dried to reuse for next year.



Camp Gear repairs - If your gear breaks, see the B-Alternative team to get it repaired or if irreparable dispose of it thoughtfully. Don't leave it on site at the end of the event.

CLEAN UP INITIATIVES

Campsite Education



B-Alternative will be walking around campsites to ensure tents and marquees are set up correctly, so they don't get damaged and become single-use items. They will also be checking on litter and general cleanliness of campsites and team areas.

Clean Campsite/Team Area Competition



Prizes will be awarded to the five cleanest campsites/team areas across the event as judged by our environmental team. Encourage your friends to clean up, recycle, compost, get your camp in order!

Spot Prizes



B-Alternative will also be awarding prizes to people on the spot who are seen to be caring for the environment...students and teachers!!

Clean up Song



Keep your ears open for this year's clean up song and when you hear it, clean up your campsite, pit space or wherever you are at that point.

Say hi to us!



Meet the friendly B-Alternative staff and volunteers throughout the event, who will be helping to make sure EB has the smallest environmental impact as possible.

STUDENT & TEACHER SUSTAINABILITY CHECKLIST

Use the below as a checklist to prepare for the event and ensure you're leaving a low environmental impact when you head home.

| SUSTAINABLE ACTIONS | ✓ |
|--|---|
| Bring a labelled reusable drink bottle. No plastic water bottles will be available on site. | |
| Bring a reusable coffee cup. No single use coffee cups will be available on site. | |
| Bring reusable items like bags, straws, and cutlery. Reusable plates, bowls, and cups will be available for use on site through B-Alternative. | |
| Borrow quality camping gear from neighbours, family, and friends if possible. Purchase second-hand gear, where possible. Buy new as a last resort. | |
| If your gear breaks, get it repaired or dispose of it thoughtfully. Don't leave it on site at the end of the event. | |
| Be conscious of what you are bringing to site - waste free, no / low packaging. Bring snacks in reusable containers rather than single use packaging, avoid individually wrapped lollies etc | |
| Make better personal hygiene choices like plastic-free, waste-free and cruelty-free skincare, haircare, and menstrual care. | |
| Separate your waste into the appropriate streams then drop them off at your nearest resource recovery station. All campers will be provided with organics, recycling, and general waste bags. | |
| Water taps will be on site. If you prefer other water, bring along water dispensers to refill drink bottles for large groups e.g. 5L or 10L etc. Cardboard casks are generally available. Please avoid bringing single use 10L plastic water dispensers. | |